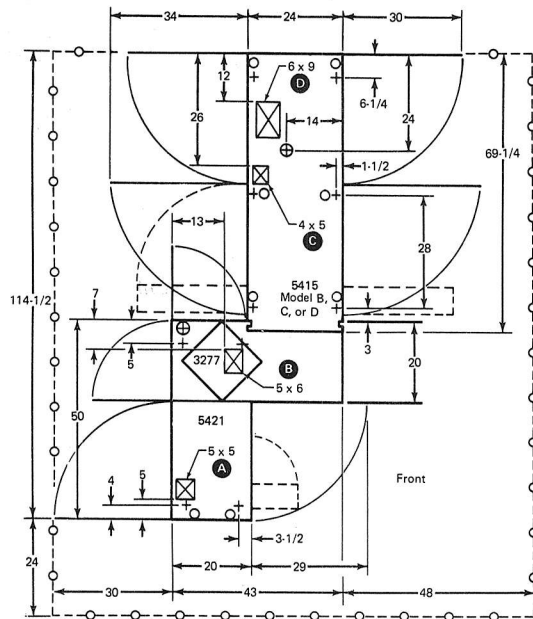


SYSTEM/3 MODEL 15 WITH IBM 5415 PROCESSING UNIT, MODELS B, C, AND D

Plan View



- A** For cables from 1403.
- B** For cables from 3411.
- C** For cables from 1442, 3741, data sets, and local directly-attached (that is, without data set or modem) communication devices.
- D** For cables from 2501, 2560, and 3340.



Specifications

Dimensions:*

| | Width | Depth | Height |
|-------------|-------|---------|--------|
| Inches | 43 | 114-1/2 | 60 |
| Centimeters | 109 | 291 | 152 |

Service Clearance:

| | Front | Rear | Right | Left |
|-------------|-------|------|-------|------|
| Inches | 24 | 0 | 48 | 30 |
| Centimeters | 61 | 0 | 122 | 76 |

Weight:**

1800 lb (820 kg)

Heat Output/hr:**

17,025 Btu (4410 kcal)
With SF5734 20,025 Btu (5110 kcal)

Airflow/min:

1000 ft³ (28 m³)

Power Requirement:

| | |
|------------------|---------------|
| Voltage | 208/230 ± 10% |
| kVa** | 5.7 |
| With SF5734 | 6.8 |
| Phases | 3 |
| Plug Type | D |
| Power cord style | B1 |

Operating Environment:

| | |
|-------------------|-----------------------------|
| Temperature | 60° to 90° F (16° to 32° C) |
| Relative humidity | 8% to 80% |
| Maximum wet bulb | 73° F (23° C) |

Nonoperating Environment:

| | |
|-------------------|------------------------------|
| Temperature | 50° to 110° F (10° to 43° C) |
| Relative humidity | 8% to 80% |
| Maximum wet bulb | 80° F (27° C) |

* Units are separated for shipment. See *Shipping Dimensions* in Section 1 for further information. When the system includes a 5424, see the plan view under *System/3 Model 15 with IBM 5424 MFCU* in this section for dimensions.

** Values for a system consisting of a 5415, a 5421, and a 3277. See *Summary of Specifications* for individual unit values. SF5734 designates processing unit expansion.